



GW*i*
SERIES 3000

GW
SERIES 3000

DE-CHF-ID-1017

 SWISS MADE

 **DC**® **THREADING
TECHNOLOGY**

DIE BESTE LÖSUNG FÜR ROSTFREIE STÄHLE UND SONDERLEGIERUNGEN

Ø 0.8 - 6.5 mm



Ø 6.5 - 20 mm



Spanabfuhr



Doppelte Standzeit



Prozesssicherheit

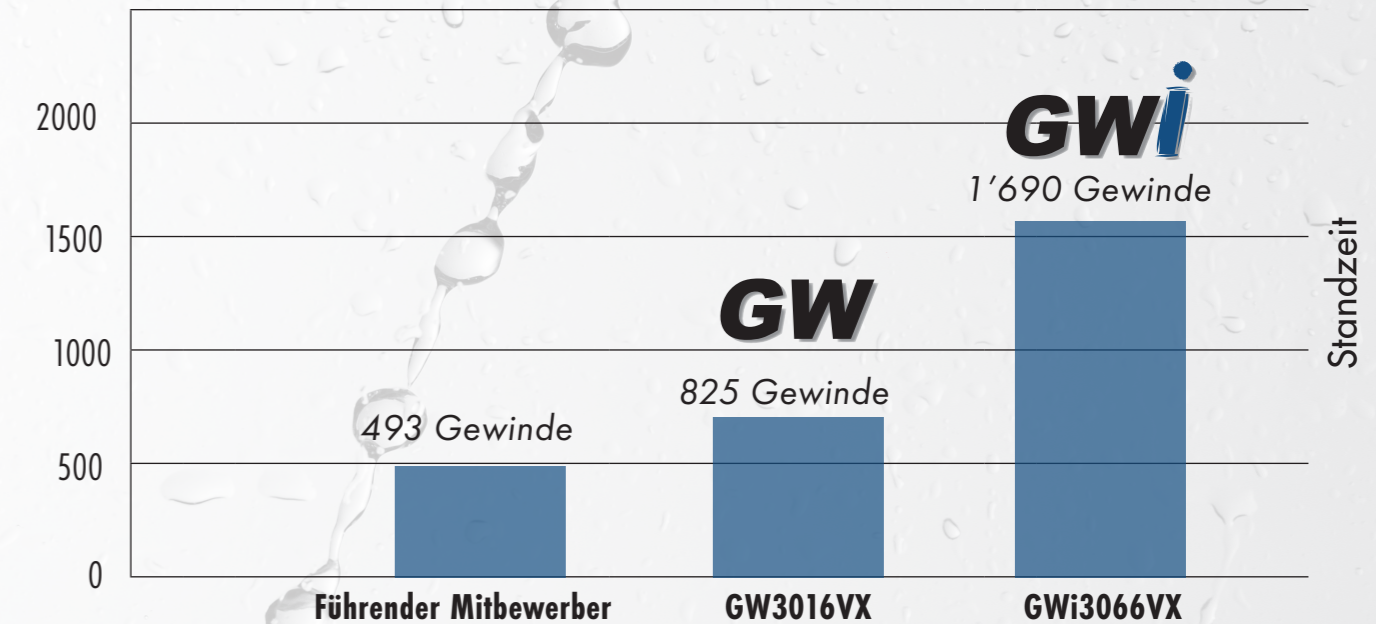


Keine Aufschweissungen

www.dcswiss.com

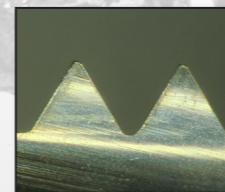
LEISTUNG

Material:	Rostfreier Stahl, 1.4301
Maschine:	DMC 650V
Lochart:	Sackloch
Gewindeabmessung:	M3 6H
Gewindetiefe:	2 x D ₁
Kühlschmiermittel:	Emulsion 8%
Vc & Vorschub:	50 m/min & 0.02 mm/Zahn

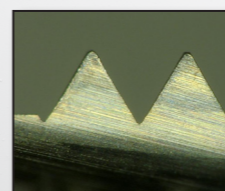


VERSCHLEISSBILD

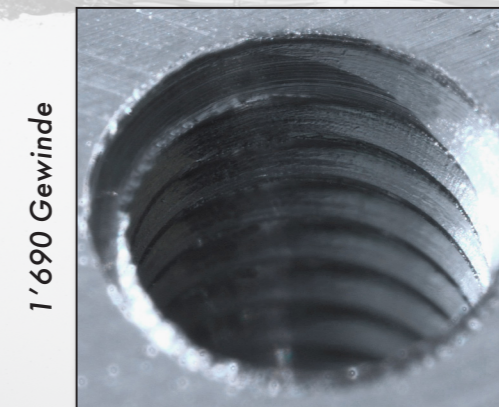
GWi VX
1'690 Gewinde



GW VX
825 Gewinde

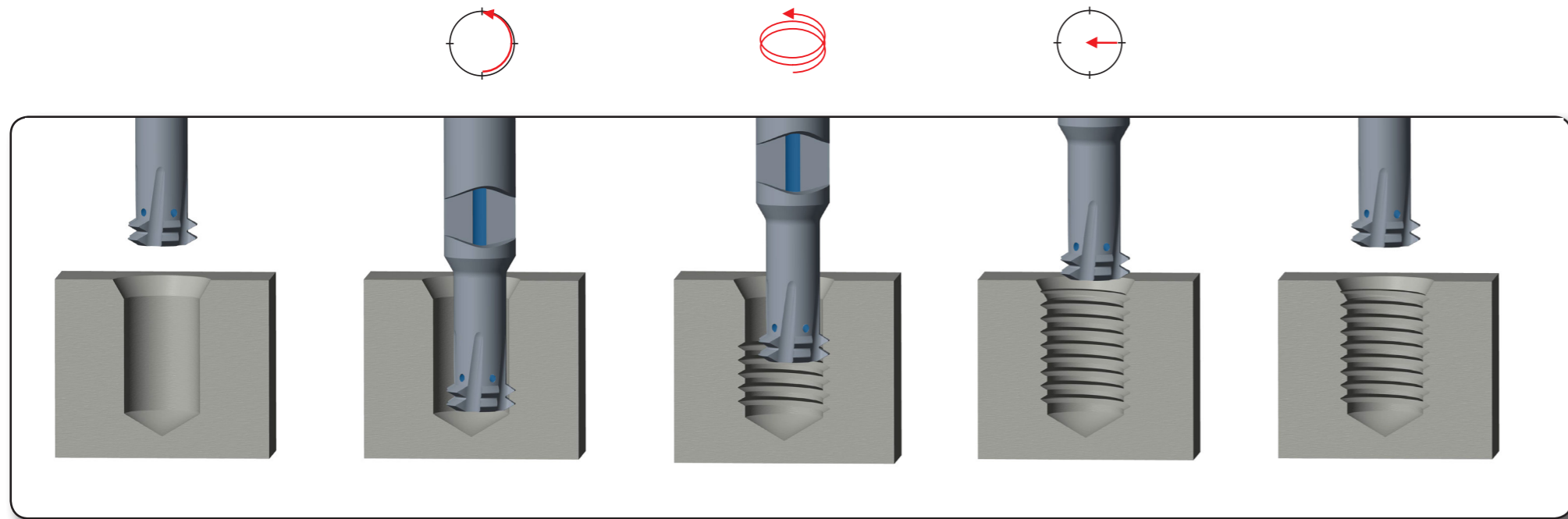


OBERFLÄCHENQUALITÄT



1'690 Gewinde in Material 1.4301
Anzahl CNC-Radius-Korrekturen: 2
(Mitbewerber: 5)

PROGRAMMIERZYKLUS



PIKTOGRAMME

	Gewindelänge 2.5 x D ₁		Verschleisschutzschicht		Innengewinde		Innenkühlung GWi
	Gewindelänge 3 x D ₁		Verschleisschutzschicht		Toleranzklasse		Profil GW
	Gewindelänge 4 x D ₁		Vollhartmetall		HSC-Bearbeitung		Ab Lager
							Lieferung in 3 Wochen

ANWENDUNGSTABELLE

EINSATZ

Optimal Geegnet

ANWENDUNGSGRUPPEN

Werkstoff	Werkstoffbezeichnung	Härte (HB)	Festigkeit Rm (N/mm ²)	Dehnung A (%)
Stahl	11 Automatenstahl	< 200	< 700	< 10
	12 Baustahl, Einsatzstahl	< 200	< 700	< 30
	13 Kohlenstoffstahl	< 300	< 1000	< 20
	14 Stahl legiert <850 N/mm ²	< 250	< 850	< 30
	15 Stahl legiert / vergütet >850 - <1150 N/mm ²	> 250	> 850	< 30
	16 Hochfester Stahl	> 250	> 850	< 12
Rostfreier Stahl	21 Rostfreier Stahl / geschwefelt	< 250	< 850	< 25
	22 Austenitisch	< 250	< 850	> 20
	23 Ferritisch, martensitisch <850 N/mm ²	< 250	< 850	> 20
	24 Ferritisch, martensitisch >850 - <1150 N/mm ²	> 250	> 850	> 15
Guss	31 Grauguss	< 250	< 850	< 10
	32 Kugelgraphitguss, Temperguss	< 250	< 850	> 10
Titan	41 Reintitan	< 250	< 850	> 20
	42 Titanlegierung	> 250	> 850	< 20
Nickel	51 Nickellegierung 1 <850 N/mm ²	< 250	< 850	> 25
	52 Nickellegierung 2 >850 - <1150 N/mm ²	> 250	> 850	< 25
	53 Nickellegierung 3 >1150 - ≤1600 N/mm ²	> 340	> 1150	< 20
Kupfer	61 Reinkupfer (Elektrolytkupfer)	< 120	< 400	> 12
	62 Messing, Bronze, Rotguss (kurzspanend)	< 200	< 700	< 12
	63 Messing (langspanend)	< 200	< 700	> 12
Aluminium Magnesium	71 Al unlegiert	< 100	< 350	> 15
	72 Al legiert Si < 1.5 %	< 150	< 500	> 15
	73 Al legiert Si > 1.5 % - < 10 %	< 120	< 400	< 15
	74 Al legiert Si > 10 %, Mg-Legierung	< 120	< 400	< 10
Kunststoff	81 Thermoplaste	-	-	-
	82 Duroplaste	-	-	-
	83 Faserverstärkte Kunststoffe	-	-	-

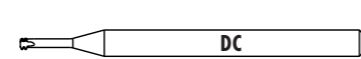
GWi GW		Vc (m/min)		Vorschub fz (mm/Zahn)			
VS	VX	VS	VX	∅ 0.3 - 1.0	∅ 1.01 - 3.0	∅ 3.01 - 6.0	∅ 6.01 - 20.0
				0.004 - 0.01	0.01 - 0.05	0.04 - 0.10	0.08 - 0.15
				0.004 - 0.01	0.01 - 0.05	0.04 - 0.10	0.08 - 0.15
				0.004 - 0.01	0.01 - 0.05	0.02 - 0.10	0.05 - 0.15
				0.004 - 0.01	0.01 - 0.05	0.02 - 0.10	0.05 - 0.15
				0.004 - 0.01	0.01 - 0.05	0.02 - 0.08	0.04 - 0.15
				0.003 - 0.01	0.006 - 0.03	0.008 - 0.05	0.01 - 0.08
				0.004 - 0.01	0.01 - 0.05	0.02 - 0.10	0.05 - 0.15
				0.004 - 0.01	0.01 - 0.03	0.02 - 0.05	0.03 - 0.08
				0.004 - 0.01	0.01 - 0.03	0.02 - 0.05	0.03 - 0.08
				0.004 - 0.01	0.01 - 0.03	0.02 - 0.05	0.03 - 0.08
				0.004 - 0.01	0.01 - 0.05	0.04 - 0.10	0.08 - 0.15
				0.004 - 0.01	0.01 - 0.05	0.02 - 0.10	0.05 - 0.15
				0.004 - 0.01	0.01 - 0.03	0.02 - 0.05	0.03 - 0.08
				0.004 - 0.01	0.01 - 0.03	0.02 - 0.05	0.03 - 0.08
				0.003 - 0.01	0.006 - 0.03	0.008 - 0.05	0.01 - 0.08
				0.004 - 0.01	0.01 - 0.05	0.02 - 0.10	0.05 - 0.15
				0.004 - 0.01	0.01 - 0.05	0.04 - 0.10	0.08 - 0.15
				0.004 - 0.01	0.01 - 0.05	0.02 - 0.10	0.05 - 0.15
				0.004 - 0.01	0.01 - 0.05	0.05 - 0.10	0.10 - 0.20
				0.004 - 0.01	0.01 - 0.05	0.05 - 0.10	0.10 - 0.20
				0.004 - 0.01	0.01 - 0.05	0.04 - 0.10	0.08 - 0.15
				0.004 - 0.01	0.01 - 0.05	0.05 - 0.10	0.10 - 0.20
				0.004 - 0.01	0.01 - 0.05	0.04 - 0.10	0.08 - 0.15
				0.004 - 0.01	0.01 - 0.05	0.04 - 0.10	0.08 - 0.15

M ISO DIN 14
ISO DIN 13

GWi

VHM
CAR

< 3µm



h6

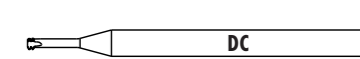
GWi3066VS GWi3067VS GWi3069VS												GWi3066VX GWi3067VX												GWi3066VS	GWi3067VS	GWi3069VS	GWi3066VX	GWi3067VX
D ₁	P	d ₁	l ₁			l ₃			d ₂ h6		d ₃	ID		ID		ID		ID		ID								
M 0.8	0.2	0.57	2.5 - 3 x D ₁	2.5 x D ₁	3 x D ₁	4 x D ₁	4 x D ₁	3	0.29	3	0.65	186029						187325										
0.9	0.225	0.64	40	2.3	2.7	40	3.5	3	0.33	3	0.70	186030						187326										
1	0.25	0.71	40	2.6	3.0	40	3.9	3	0.36	3	0.75	186031						187327										
1.2	0.25	0.91	40	2.9	3.4	40	4.4	3	0.36	3	0.75	186032						187328										
1.4	0.3	1.06	40	3.4	4.0	40	5.2	3	0.56	3	0.95	186033	186443					187329	187453									
1.6	0.35	1.20	40	3.9	4.6	40	6.0	4	0.64	3	1.10	186034	186444					187330	187454									
1.8	0.35	1.40	40	4.5	5.3	40	6.9	4	0.71	3	1.25	186035	186445					187331	187455									
2	0.4	1.54	40	5.0	5.9	40	7.7	4	0.91	3	1.45	186036	186446					187332	187456									
2.5	0.45	1.98	40	5.6	6.6	40	8.6	4	0.98	3	1.60	186037	186447					187333	187457									
3	0.5	2.43	40	6.9	8.1	40	10.6	4	1.35	3	2.05	186038	186448	186610				187334	187458									
3.5	0.6	2.81	51	8.4	9.9	51	12.9	5	1.73	4	2.50	186039	186449	186611				187335	187459									
4	0.7	3.20	51	9.9	11.6	51	15.1	6	1.97	4	2.90	186040	186450	186612				187336	187460									
5	0.8	4.08	51	11.3	13.3	51	17.3	6	2.22	4	3.30	186041	186451	186613				187337	187461									
6	1	4.85	51	14.0	16.5	51	21.5	8	2.96	4	4.20	186042	186452	186614				187338	187462									
8	1.25	5.95	51	16.8	19.8	51	25.8	8	3.45	4	5.00	186043	186453	186615				187339	187463									
10	1.5	7.95	75	23.0	27.0	75	35.0	6	4.20	5	6.80	186044	186454	186616				187340	187464									
12	1.75	9.95	83	28.0	33.0	83	43.0	8	5.85	5	8.50	186045	186455	186617				187341	187465									
14	2	10.95	95	34.0	40.0	95	52.0	10	7.50	5	10.25	186046	186456	186618				187342	187466									
16	2	10.95	120	44.0	52.0	120	68.0	12	8.15	5	14.00	186047	186457	186619				187343	187467									
18	2.5	13.95	120	44.0	52.0	120	68.0	12	8.15	5	14.00	186048	186458	186620				187344	187468									
20	2.5	13.95	135	55.0	65.0	135	85.0	14	10.45	6	15.50	186817	186825	186833				187345	187469									
			135	55.0	65.0	135	85.0	14	10.45	6	17.50	186049	186459	186621				187346	187470									

M ISO DIN 14
ISO DIN 13

GW

VHM
CAR

< 3µm



h5/h6

GW3016VS GW3017VS GW3019VS												GW3016VX GW3017VX												GW3016VS	GW3017VS	GW3019VS	GW3016VX	GW3017VX
D ₁	P	d ₁	l ₁			l ₃			d ₂ h5		d ₃	ID		ID		ID		ID		ID								
M 0.8	0.2	0.57	2.5 - 3 x D ₁	2.5 x D ₁	3 x D ₁	4 x D ₁	4 x D ₁	3	0.29	3	0.65	167035						186266	167077	187261	187389							
0.9	0.225	0.64	39	2.3	2.7	39	3.5	3	0.33	3	0.70	167036						186267	167078	187262	187390							
1	0.25	0.71	39	2.6	3.0	39	3.9	3	0.36	3	0.75	167037						186268	167079	187263	187391							
1.2	0.25	0.91	39	2.9	3.4	39	4.4	3	0.36	3	0.75	167038						186269	167080	187264	187392							
1.4	0.3	1.06	39	3.4	4.0	39	5.2	3	0.56	3	0.95	167039	186270					186270	167081	187265	187393							
1.6	0.35	1.20	39	3.9	4.6	39	6.0	3	0.64	3	1.10	167040	186271					186271	167082	187266	187394							
1.8	0.35	1.40	39	4.5	5.3	39	6.9	3	0.71	3	1.25	167041	186272					186272	167083	187267	187395							
2	0.4	1.54	39	5.0	5.9	39	7.7	3	0.91	3	1.45	167042	186273					186273	167084	187268	187396							
2.5	0.45	1.98	39	5.6	6.6	39	8.6	3	0.98	3	1.60	167043	186274					186274	167085	187269	187397							
3	0.5	2.43	39	6.9	8.1	39	10.6	3	1.35	3	2.05	167044	186275					186275	167086	187270	187398							
3.5	0.6	2.81	51	8.4	9.9	51	12.9	5	1.73	4	2.50	167045	186276					186276	167087	187271	187399							
4	0.7	3.20	51	9.9	11.6	51	15.1	6	1.97	4	2.90	167046	186277					186277	167088	187272	187400							
5	0.8	4.08	51	11.3	13.3	51	17.3	6	2.22	4	3.30	167047	186278					186278	167089	187273	187401							
6	1	4.85	51	14.0	16.5	51	21.5	8	2.96	4	4.20	167048	186279					186279	167090	187274	187402							
8	1.25	5.95	51	16.8	19.8	51	25.8	8	3.45	4	5.00	175243	186280					186280	175274	187275	187403							
10	1.5	7.95	63	23.0	27.0	75	35.0	6*	4.20	5	6.80	175244	186281					186281	175275	187276	187404							
12	1.75	9.95	67	28.0	33.0	83	43.0	8*	5.85	5	8.50	175245	186282					186282	175276	187277	187405							
14	2	10.95	76	34.0	40.0	95	52.0	10*	7.50	5	10.25	184748	186283					186283	184751	187278	187406							
16	2	10.95	95	44.0	52.0	120	68.0	12*	8.15	5	12.00	186813	186284					186284	186829	187279	187407							
18	2.5	13.95	95	44.0	52.0	120	68.0	12*	8.15	5	14.00	184503	186821					186821	186829	187280	187408							
20	2.5	13.95	105	55.0	65.0	135	85.0	14*	10.45	6	15.50	186814	186822					186822	186830	187281	187409							

* tol. h6

												GWi3066VS	GWi3067VS	GWi3069VS	GWi3066VX	GWi3067VX																														
GWi3066VS GWi3067VS GWi3069VS		VS		GWi3066VX GWi3067VX		VX																																								
<table border="1"> <tr><td>11</td><td>12</td><td>13</td><td>14</td><td>15</td></tr> <tr><td>16</td><td>31</td><td>32</td><td>41</td><td>42</td></tr> <tr><td>61</td><td>62</td><td>63</td><td>71</td><td>72</td></tr> <tr><td>73</td><td>74</td><td>81</td><td>82</td><td>83</td></tr> </table>		11	12	13	14	15	16	31	32	41	42	61	62	63	71	72	73	74	81	82	83			<table border="1"> <tr><td>21</td><td>22</td><td>23</td><td>24</td><td>51</td></tr> <tr><td>52</td><td>53</td><td></td><td></td><td></td></tr> </table>		21	22	23	24	51	52	53														
11	12	13	14	15																																										
16	31	32	41	42																																										
61	62	63	71	72																																										
73	74	81	82	83																																										
21	22	23	24	51																																										
52	53																																													
D ₁	P	d ₁	l ₁	l ₃	l ₃	l ₁	l ₃	d ₂ h6	d ₃			ID																																		
MF 2	0.2	1.77	40	5.3	6.3	40	8.3	4	1.49	3	1.80	186086	186488	187346	187470																															
2	0.25	1.71	40	5.4	6.4	40	8.4	4	1.36	3	1.75	186087	186489	187347	187471																															
2.5	0.2	2.27	40	6.6	7.8	40	10.3	4	1.99	3	2.30	186088	186490	187348	187472																															
2.5	0.25	2.21	40	6.6	7.9	40	10.4	4	1.86	3	2.25	186089	186491	187349	187473																															
3	0.35	2.60	51	8.2	9.7	51	12.7	5	2.11	4	2.65	186090	186492	186620	187350	187474																														
4	0.5	3.43	51	10.9	12.9	51	16.9	6	2.73	4	3.50	186091	186493	186621	187351	187475																														
5	0.5	4.43	51	13.4	15.9	51	20.9	8	3.73	4	4.50	186092	186494	186622	187352	187476																														
6	0.75	4.95	51	16.4	19.4	51	25.4	8	3.90	4	5.25	186093	186495	186623	187353	187477																														
8	1	5.95	75	22.0	26.0	75	34.0	6	4.55	5	7.00	186094	186496	186624	187354	187478																														
10	1	7.95	83	27.0	32.0	83	42.0	8	6.55	5	9.00	186095	186497	186625	187355	187479																														
10	1.25	7.95	83	28.0	33.0	83	43.0	8	6.20	5	8.75	186096	186498	186626	187356	187480																														
12	1.5	9.95	95	33.0	39.0	95	51.0	10	7.85	5	10.50	186097	186499	186627	187357	187481																														
14	1.5	10.95	120	43.0	51.0	120	67.0	12	8.85	5	12.50	186098	186500	186628	187358	187482																														
16	1.5	10.95	120	43.0	51.0	120	67.0	12	8.85	5	14.50	186819	186827	186835	187359	187483																														
18	1.5	13.95	135	53.0	63.0	135	83.0	14	11.85	6	16.50	186099	186501	186629	187360	187484																														
20	1.5	13.95	135	53.0	63.0	135	83.0	14	11.85	6	18.50	186820	186828	186836	187361	187485																														

												GW3016VS	GW3017VS	GW3019VS	GW3016VX	GW3017VX																														
GW3016VS GW3017VS GW3019VS		VS		GW3016VX GW3017VX		VX																																								
<table border="1"> <tr><td>11</td><td>12</td><td>13</td><td>14</td><td>15</td></tr> <tr><td>16</td><td>31</td><td>32</td><td>41</td><td>42</td></tr> <tr><td>61</td><td>62</td><td>63</td><td>71</td><td>72</td></tr> <tr><td>73</td><td>74</td><td>81</td><td>82</td><td>83</td></tr> </table>		11	12	13	14	15	16	31	32	41	42	61	62	63	71	72	73	74	81	82	83			<table border="1"> <tr><td>21</td><td>22</td><td>23</td><td>24</td><td>51</td></tr> <tr><td>52</td><td>53</td><td></td><td></td><td></td></tr> </table>		21	22	23	24	51	52	53														
11	12	13	14	15																																										
16	31	32	41	42																																										
61	62	63	71	72																																										
73	74	81	82	83																																										
21	22	23	24	51																																										
52	53																																													
D ₁	P	d ₁	l ₁	l ₃	l ₃	l ₁	l ₃	d ₂ h5	d ₃			ID																																		
MF 2	0.2	1.77	39	5.3	6.3	39	8.3	3	1.49	3	1.80	171442	186325	175270	187282	187410																														
2	0.25	1.71	39	5.4	6.4	39	8.4	3	1.36	3	1.75	186209	186326	186592	187283	187411																														
2.5	0.2	2.27	39	6.6	7.8	39	10.3	3	1.99	3	2.30	175241	186327	175271	187284	187412																														
2.5	0.25	2.21	39	6.6	7.9	39	10.4	3	1.86	3	2.25	167299	186328	175272	187285	187413																														
3	0.35	2.60	51	8.2	9.7	51	12.7	5	2.11	4	2.65	175242	186329	175273	187286	187414																														
4	0.5	3.43	51	10.9	12.9	51	16.9	5	2.73	4	3.50	184572	186330	186593	187287	187415																														
5	0.5	4.43	51	13.4	15.9	51	20.9	5	3.73	4	4.50	186210	175199	171033	187288	187416																														
6	0.75	4.95	51	16.4	19.4	51	25.4	5	3.90	4	5.25	186211	186331	186594	187289	187417																														
8	1	5.95	63	22.0	26.0	75	34.0	6*	4.55	5	7.00	186212	181233	186595	187290	187418																														
10	1	7.95	67	27.0	32.0	83	42.0	8*	6.55	5	9.00	186213	186332	186596	187291	187419																														
10	1.25	7.95	67	28.0	33.0	83	43.0	8*	6.20	5	8.75	186214	186333	186597	187292	187420																														
12	1.5	9.95	76	33.0	39.0	95	51.0	10*	7.85	5	10.50	186215	186334	186598	187293	187421																														
14	1.5	10.95	95	43.0	51.0	120	67.0	12*	8.85	5	12.50	186216	186335	186599	187294	187422																														
16	1.5	10.95	95	43.0	51.0	120	67.0	12*	8.85	5	14.50	186815	186823	186831	187295	187423																														
18	1.5	13.95	105	53.0	63.0	135	83.0	14*	11.85	6	16.50	186217	186336	186600	187296	187424																														
20	1.5	13.95	105	53.0	63.0	135	83.0	14*	11.85	6	18.50	186816	186824	186832	187297	187425																														

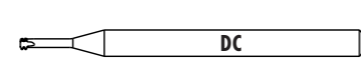
* tol. h6

GWi3066VS													GWi3066VX													GWi3066VS		GWi3066VX		GWi3067VS		GWi3067VX	
D ₁	P	D ₁	d ₁	l ₁	l ₃	l ₃	l ₁	l ₃	d ₂ h6	d ₃																							
TPI	mm	mm	2.5 - 3 x D ₁	2.5 x D ₁	3 x D ₁	4 x D ₁	4 x D ₁				ID																						
UNC 2	56	2.18	1.66	40	6.1	7.2	40	9.4	4	1.02	3	1.80	186128					187362															
3	48	2.51	1.90	40	7.0	8.3	40	10.8	4	1.16	3	2.00	186129					187363															
4	40	2.84	2.11	40	8.0	9.4	40	12.2	5	1.22	3	2.30	186130	186526			187364	187486															
5	40	3.17	2.44	51	9.1	10.7	51	13.9	5	1.55	4	2.60	186131	186527			187365	187487															
6	32	3.50	2.59	51	10.2	12.0	51	15.5	6	1.48	4	2.80	186132	186528	186630		187366	187488															
8	32	4.16	3.25	51	11.9	14.0	51	18.1	6	2.14	4	3.40	186133	186529	186631		187367	187489															
10	24	4.82	3.60	51	14.0	16.4	51	21.2	8	2.12	4	3.80	186134	186530	186632		187368	187490															
													186135	186531	186633		187369	187491															
1/4	20	6.35	4.89	51	18.2	21.4	51	27.7	8	3.11	4	5.10	186136	186532	186634		187370	187492															
5/16	18	7.93	5.95	75	23.0	27.0	75	35.0	6	3.97	5	6.60	186137	186533	186635		187371	187493															
3/8	16	9.52	7.10	83	27.0	32.0	83	41.0	8	4.87	5	8.00	186138	186534	186636		187372	187494															
7/16	14	11.11	7.95	83	32.0	37.0	83	48.0	8	5.41	5	9.30	186139	186535	186637		187373	187495															
1/2	13	12.70	9.95	95	36.0	42.0	95	55.0	10	7.21	5	10.80	186140	186536	186638		187374	187496															

GW3016VS													GW3016VX													GW3016VS		GW3017VS		GW3019VS		GW3016VX		GW3017VX			
D ₁	P	D ₁	d ₁	l ₁	l ₃	l ₃	l ₁	l ₃	d ₂ h5	d ₃																											
TPI	mm	mm	2.5 - 3 x D ₁	2.5 x D ₁	3 x D ₁	4 x D ₁	4 x D ₁				ID																										
UNC 2	56	2.18	1.66	39	6.1	7.2	39	9.4	3	1.02	3	1.80	167500					187298		187426																	
3	48	2.51	1.90	39	7.0	8.3	39	10.8	3	1.16	3	2.00	186236					187299		187427																	
4	40	2.84	2.11	39	8.0	9.4	39	12.2	3	1.22	3	2.30	167501	186367			187300	187428																			
5	40	3.17	2.44	51	9.1	10.7	51	13.9	5	1.55	4	2.60	186237	186368			187301	187429																			
6	32	3.50	2.59	51	10.2	12.0	51	15.5	5	1.48	4	2.80	167502	186369	186602		187302	187430																			
8	32	4.16	3.25	51	11.9	14.0	51	18.1	5	2.14	4	3.40	167503	186370	167510		187303	187431																			
10	24	4.82	3.60	51	14.0	16.4	51	21.2	5	2.12	4	3.80	173986	186371	173979		187304	187432																			
													186238	186372	186603		187305	187433																			
1/4	20	6.35	4.89	51	18.2	21.4	51	27.7	5	3.11	4	5.10	167504	186373	167511		187306	187434																			
5/16	18	7.93	5.95	63	23.0	27.0	75	35.0	6*	3.97	5	6.60	175246	186374	175277		187307	187435																			
3/8	16	9.52	7.10	67	27.0	32.0	83	41.0	8*	4.87	5	8.00	173546	186375	175278		187308	187436																			
7/16	14	11.11	7.95	67	32.0	37.0	83	48.0	8*	5.41	5	9.30	186239	186376	186604		187309	187437																			
1/2	13	12.70	9.95	76	36.0	42.0	95	55.0	10*	7.21	5	10.80	175247	186377	175279		187310	187438																			

* tol. h6

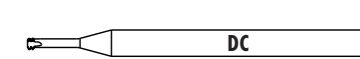
UNF ANSI B1.1



h6

GWi3066VS GWi3067VS GWi3069VS GWi3066 VXX GWi3067 VXX																							
GWi3066VS GWi3067VS GWi3069VS				GWi3066VX GWi3067VX																			
D ₁	P	D ₁	d ₁	l ₁	l ₃	l ₃	l ₁	l ₃	d ₂ h6	d ₃	⚙️	🚚	ID	📦	🚚								
TPI	mm	mm	2.5 - 3 x D ₁	2.5 x D ₁	3 x D ₁	4 x D ₁	4 x D ₁																
UNF 0	80	1.52	1.15	40	4.3	5.0	40	6.6	4	0.71	3	1.20	186167		187375								
1	72	1.85	1.44	40	5.1	6.1	40	7.9	4	0.95	3	1.50	186168		187376								
2	64	2.18	1.72	40	6.0	7.1	40	9.3	4	1.16	3	1.80	186169		187377								
4	48	2.84	2.23	40	7.9	9.3	40	12.1	5	1.49	3	2.40	186170	186559	187378	187497							
5	44	3.17	2.51	51	9.0	10.6	51	13.8	5	1.70	4	2.60	186171	186560	187379	187498							
6	40	3.50	2.77	51	10.0	11.7	51	15.2	6	1.88	4	2.90	186172	186561	186639	187380	187499						
8	36	4.16	3.35	51	11.7	13.8	51	18.0	6	2.36	4	3.50	186173	186562	186640	187381	187500						
10	32	4.82	3.91	51	13.5	15.9	51	20.8	8	2.80	4	4.10	186174	186563	186641	187382	187501						
													186175	186564	186642	187383	187502						
1/4	28	6.35	4.95	51	17.6	20.7	51	27.1	8	3.68	4	5.50	186176	186565	186643	187384	187503						
5/16	24	7.93	5.95	75	22.0	26.0	75	34.0	6	4.47	5	6.90	186177	186566	186644	187385	187504						
3/8	24	9.52	7.10	83	26.0	31.0	83	40.0	8	5.62	5	8.50	186178	186567	186645	187386	187505						
7/16	20	11.11	7.95	83	31.0	36.0	83	47.0	8	6.17	5	9.90	186179	186568	186646	187387	187506						
1/2	20	12.70	9.95	95	35.0	41.0	95	54.0	10	8.17	5	11.50	186180	186569	186647	187388	187507						

UNF ANSI B1.1



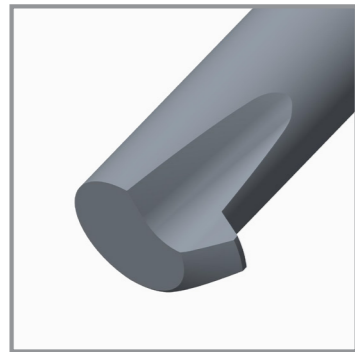
h5/h6

GW3016VS GW3017VS GW3019VS GW3016 VXX GW3017 VXX																							
GW3016VS GW3017VS GW3019VS				GW3016VX GW3017VX																			
D ₁	P	D ₁	d ₁	l ₁	l ₃	l ₃	l ₁	l ₃	d ₂ h5	d ₃	⚙️	🚚	ID	📦	🚚								
TPI	mm	mm	2.5 - 3 x D ₁	2.5 x D ₁	3 x D ₁	4 x D ₁	4 x D ₁																
UNF 0	80	1.52	1.15	39	4.3	5.0	39	6.6	3	0.71	3	1.20	175248		186404	175280	187311	187439					
1	72	1.85	1.44	39	5.1	6.1	39	7.9	3	0.95	3	1.50	175249		186405	175281	187312	187440					
2	64	2.18	1.72	39	6.0	7.1	39	9.3	3	1.16	3	1.80	186248		186406	186605	187313	187441					
4	48	2.84	2.23	39	7.9	9.3	39	12.1	3	1.49	3	2.40	175250		186407	172376	187314	187442					
5	44	3.17	2.51	51	9.0	10.6	51	13.8	5	1.70	4	2.60	186249		186408	169815	187315	187443					
6	40	3.50	2.77	51	10.0	11.7	51	15.2	5	1.88	4	2.90	186250		186409	186606	187316	187444					
													175251		186410	175282	187317	187445					
10	32	4.82	3.91	51	13.5	15.9	51	20.8	5	2.80	4	4.10	167505		184633	167512	187318	187446					
													186251		186411	186607	187319	187447					
1/4	28	6.35	4.95	51	17.6	20.7	51	27.1	5	3.68	4	5.50	167506		186412	167513	187320	187448					
5/16	24	7.93	5.95	63	22.0	26.0	75	34.0	6*	4.47	5	6.90	175252		186413	175283	187321	187449					
3/8	24	9.52	7.10	67	26.0	31.0	83	40.0	8*	5.62	5	8.50	175253		186414	175284	187322	187450					
7/16	20	11.11	7.95	67	31.0	36.0	83	47.0	8*	6.17	5	9.90	186252		186415	186608	187323	187451					
1/2	20	12.70	9.95	76	35.0	41.0	95	54.0	10*	8.17	5	11.50	186253		186416	186609	187324	187452					

BREITES GEWINDEFRÄSER PROGRAMM

GW
SERIES 1000

VS

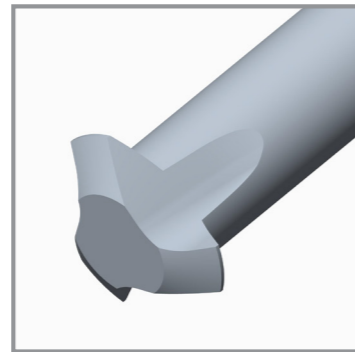


GW1116 / GW1116VS

S 0.3 – S 1.4

GW
SERIES 2000

VS



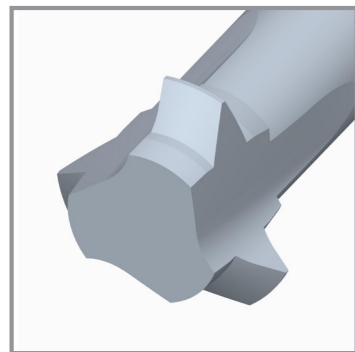
GW2016 / GW2016VS

M 0.8 – M 6

S 0.8 – S 1.4

GW
SERIES 4000

VS



GW4116 / GW4116VS

GW4119 / GW4119VS

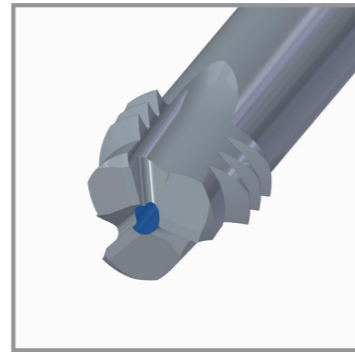
M 0.8 – M 6

UNC 2-56 – UNC 1/4-20

UNF 10-32 – UNF 1/4-28

ZBGF

VS



ZBGF6065VS / ZBGF6067VS

M 3 – M 16

UNC 4-40 – UNC 5/8-11

UNF 4-48 – UNF 5/8-18



**THREADING
TECHNOLOGY**

www.dcswiss.com

► **GEWINDEBOHREN**



► **GEWINDEFORMEN**



► **GEWINDELEHREN**



► **GEWINDEFRÄSEN**



► **GEWINDESCHNEIDFUTTER**



DC SWISS SA

CH-2735 Malleray
Tel. +41 32 491 63 63
Fax +41 32 491 64 64
E-mail: info@dcswiss.ch

DC SWISS GmbH
Graseggerstraße 125
DE-50737 Köln
Tel. +49 221 995 532-0
Fax +49 221 995 532-10
E-Mail: info@dcswiss.de

DC SWISS s.r.l.
Via Canova 10
IT-20017 Rho
Tel. +39 02 669 40 41
Fax +39 02 669 78 50
E-mail: info@dcswiss.it

DC SWISS UK Ltd
9 Orgreave Road
UK-Sheffield S13 9LQ
Tel. +44 114 2939013
Fax +44 114 2880936
E-mail: info@dcswiss.co.uk

DC SWISS China
1988 Dongfang Road
CN-Shanghai 200125
Tel. +86 (0)21 610 96 296
Fax +86 (0)21 230 10 401
E-mail: info@dcswiss.cn

