

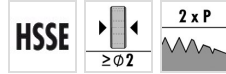
# Z5120

DIN 13

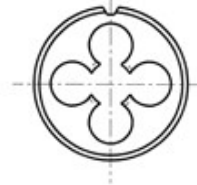
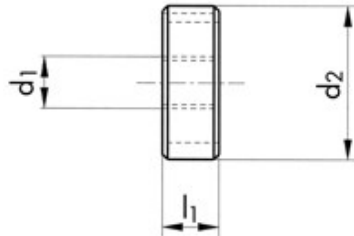
DIN EN 22568



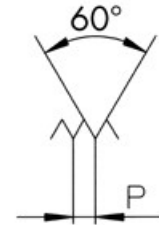
### CHARACTERISTICS



### Technical drawing



### Profile sketch



### Tool data

ID	D1	Ø d1	Tol	P	l1	d2		
104782	M20x1.5	20.00	6g	1.500	14.0	45.00	6	19.85

### Product range Z5120 M20x1.5 6g

ID	D1	Ø d1	Tol	P	l1	d2		
104791	M5x0.5	5.00	6g	0.500	5.0	20.00	4	4.93
104793	M6x0.5	6.00	6g	0.500	5.0	20.00	4	5.93
104794	M6x0.75	6.00	6g	0.750	7.0	20.00	4	5.90
104797	M8x1	8.00	6g	1.000	9.0	25.00	4	7.88
104796	M8x0.75	8.00	6g	0.750	9.0	25.00	4	7.90
104769	M12x1.5	12.00	6g	1.500	10.0	38.00	5	11.85
104768	M12x1	12.00	6g	1.000	10.0	38.00	5	11.88
104772	M14x1.5	14.00	6g	1.500	10.0	38.00	5	13.85
104771	M14x1	14.00	6g	1.000	10.0	38.00	5	13.88
104766	M10x1	10.00	6g	1.000	11.0	30.00	5	9.88
104765	M10x0.75	10.00	6g	0.750	11.0	30.00	5	9.90
104775	M16x1.5	16.00	6g	1.500	14.0	45.00	5	15.85
104774	M16x1	16.00	6g	1.000	14.0	45.00	5	15.88
104782	M20x1.5	20.00	6g	1.500	14.0	45.00	6	19.85
104781	M20x1	20.00	6g	1.000	14.0	45.00	6	19.88