

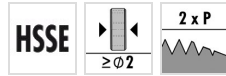
Z5120

DIN 13

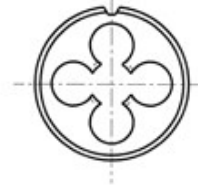
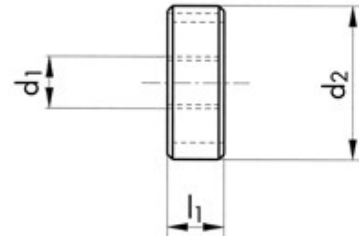
DIN EN 22568



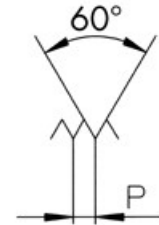
CHARACTERISTICS



Technical drawing



Profile sketch



Tool data

ID	D1	Ø d1	Tol	P	l1	d2		
104773	M14	14.00	6g	2.000	14.0	38.00	5	13.82

Product range Z5120 M14 6g

ID	D1	Ø d1	Tol	P	l1	d2		
125269	M2	2.00	6G	0.400	5.0	16.00	4	1.93
104779	M2.5	2.50	6g	0.450	5.0	16.00	4	2.43
104788	M3	3.00	6g	0.500	5.0	20.00	4	2.92
104789	M3.5	3.50	6g	0.600	5.0	20.00	4	3.41
104790	M4	4.00	6g	0.700	5.0	20.00	4	3.91
104792	M5	5.00	6g	0.800	7.0	20.00	4	4.90
104795	M6	6.00	6g	1.000	7.0	20.00	4	5.88
104798	M8	8.00	6g	1.250	9.0	25.00	5	7.87
104767	M10	10.00	6g	1.500	11.0	30.00	5	9.85
104770	M12	12.00	6g	1.750	14.0	38.00	5	11.83
104773	M14	14.00	6g	2.000	14.0	38.00	5	13.82
104776	M16	16.00	6g	2.000	18.0	45.00	5	15.82
104778	M18	18.00	6g	2.500	18.0	45.00	5	17.79
104783	M20	20.00	6g	2.500	18.0	45.00	5	19.79
104787	M24	24.00	6g	3.000	22.0	55.00	6	23.76