

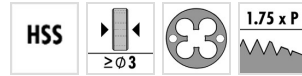
N5220

DIN 13

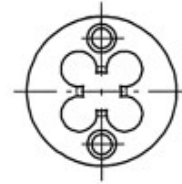
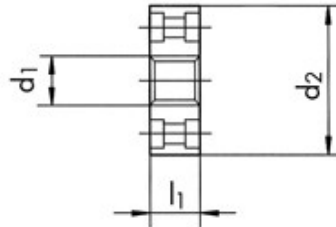
DC



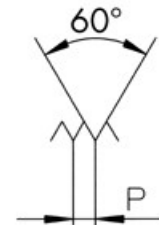
CHARACTERISTICS



Technical drawing



Profile sketch



Tool data

ID	D1	Ø d1	Tol	P	l1	d2		
104389	M7x0.5	7.00	6g	0.500	7.0	25.00	4	6.93

Product range N5220 M7x0.5 6g

ID	D1	Ø d1	Tol	P	l1	d2		
104373	M3x0.35	3.00	6g	0.350	3.0	16.00	4	2.94
104378	M4x0.5	4.00	6g	0.500	4.0	16.00	4	3.93
104382	M5x0.5	5.00	6g	0.500	5.0	20.00	4	4.93
104385	M6x0.5	6.00	6g	0.500	5.0	20.00	4	5.93
104386	M6x0.75	6.00	6g	0.750	7.0	20.00	4	5.90
104390	M7x0.75	7.00	6g	0.750	7.0	25.00	4	6.90
104389	M7x0.5	7.00	6g	0.500	7.0	25.00	4	6.93
104352	M10x1.25	10.00	6g	1.250	9.0	25.00	6	9.86