

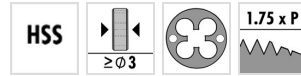
N5220

DIN 13

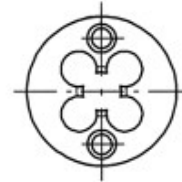
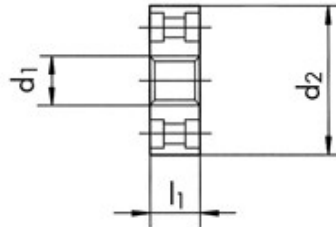
DC



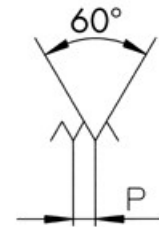
CHARACTERISTICS



Technical drawing



Profile sketch



Tool data

ID	D1	Ø d1	Tol	P	l1	d2		
104388	M6	6.00	6g	1.000	7.0	20.00	4	5.88

Product range N5220 M6 6g

ID	D1	Ø d1	Tol	P	l1	d2		
104346	M1.4	1.40	6h	0.300	2.6	16.00	4	1.36
104347	M1.6	1.60	6g	0.350	2.6	16.00	4	1.54
104367	M2	2.00	6g	0.400	3.5	16.00	4	1.93
104369	M2.3	2.30	6g	0.400	3.5	16.00	4	2.23
104371	M2.5	2.50	6g	0.450	3.5	16.00	4	2.43
104372	M2.6	2.60	6g	0.450	3.5	16.00	4	2.53
104374	M3	3.00	6e	0.500	3.5	16.00	4	2.90
104375	M3	3.00	6g	0.500	3.5	16.00	4	2.92
104376	M3.5	3.50	6g	0.600	4.0	16.00	4	3.41
104379	M4	4.00	6e	0.700	5.0	16.00	4	3.87
104380	M4	4.00	6g	0.700	5.0	16.00	4	3.91
104383	M5	5.00	6e	0.800	7.0	20.00	4	4.87
104384	M5	5.00	6g	0.800	7.0	20.00	4	4.90
104387	M6	6.00	6e	1.000	7.0	20.00	4	5.85
104388	M6	6.00	6g	1.000	7.0	20.00	4	5.88
104396	M8	8.00	6e	1.250	9.0	25.00	4	7.83
104397	M8	8.00	6g	1.250	9.0	25.00	4	7.87
104353	M10	10.00	6e	1.500	11.0	30.00	6	9.82

ID	D1	Ø d1	Tol	P	l1	d2		
104354	M10	10.00	6g	1.500	11.0	30.00	6	9.85
104358	M12	12.00	6g	1.750	11.0	30.00	6	11.83