

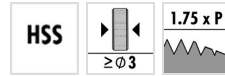
N5120

ASME B1.1

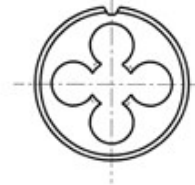
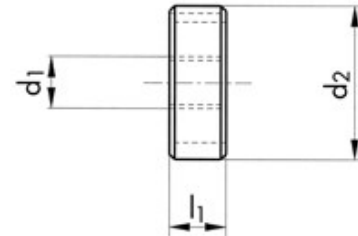
DIN EN 22568



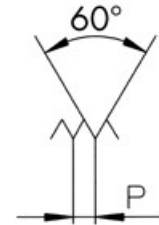
CHARACTERISTICS



Technical drawing



Profile sketch



Tool data

ID	D1	Ø d1	Tol	P	l1	d2		
104265	UNC5/8-11	15.88	2A	2.309	18.0	45.00	4	15.68

Product range N5120 UNC5/8-11 2A

ID	D1	Ø d1	Tol	P	l1	d2		
104263	UNC5-40	3.18	2A	0.635	5.0	20.00	4	3.09
104266	UNC6-32	3.51	2A	0.794	7.0	20.00	4	3.41
104269	UNC8-32	4.17	2A	0.794	7.0	20.00	4	4.07
104258	UNC10-24	4.83	2A	1.058	7.0	20.00	4	4.71
104259	UNC12-24	5.49	2A	1.058	7.0	20.00	4	5.37
104256	UNC1/4-20	6.35	2A	1.270	7.0	20.00	4	6.22
104264	UNC5/16-18	7.94	2A	1.411	9.0	25.00	4	7.80
104262	UNC3/8-16	9.53	2A	1.588	11.0	30.00	4	9.37
104267	UNC7/16-14	11.11	2A	1.814	11.0	30.00	4	10.95
111387	UNC1/2-13	12.70	2A	1.954	14.0	38.00	4	12.52
104270	UNC9/16-12	14.29	2A	2.117	14.0	38.00	4	14.10
104265	UNC5/8-11	15.88	2A	2.309	18.0	45.00	4	15.68
104261	UNC3/4-10	19.05	2A	2.540	18.0	45.00	5	18.84
104268	UNC7/8-9	22.23	2A	2.822	22.0	55.00	5	22.00
104257	UNC1-8	25.40	2A	3.175	22.0	55.00	5	25.16
104251	UNC1 1/4-7	31.75	2A	3.629	25.0	65.00	6	31.49
104250	UNC1 1/2-6	38.10	2A	4.233	30.0	75.00	6	37.81
104260	UNC2-4.5	50.80	2A	5.644	36.0	90.00	7	50.45